



Accommodation in a beautiful heritage home with the following advantages:

Location

- 10-15 minute walk to the Museum and 10 minutes to the Lab.
- Transport if necessary, will drop off and pick up.
- Situated above George Street (on the Hospital end)

Note these rooms are not available on AirBnB - will only be participants of the course staying here.

Meals

- Breakfast 7 days; dinner Monday to Friday
- Award-winning chef
- Healthy, gourmet meals to suit
- Baking and espresso coffee available

See reviews on page 2.

Laundry and cleaning

- Laundry available
- Serviced Rooms

Central heating

Rooms

- Three areas available plus two rooms available nearby, off-site with same conditions as heritage house
- Queen beds with en-suites
- Sunny, light, comfortable rooms
- Private, quiet space with ample study area & facilities
- Tea and coffee facilities; kitchen available
- Magnificent views

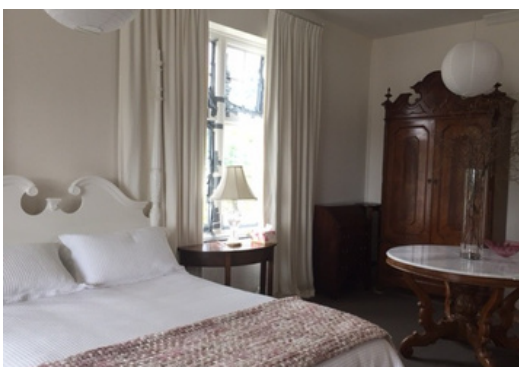
Free Wifi

For more information or to book, contact Rose
021 068 9188 | rose@cre8ive.co.nz

Warm, friendly hosts who will provide a stress-free, caring environment

Four areas are available:

1. West wing: a large room with both a separate toilet and shower. Antique furniture with convenient storage. Desk and additional table.



Contact: Rosemary Crick | 19 Royal Terrace, Dunedin
Ph: 021 068 9188 | E: rose@cre8ive.co.nz

2. East wing suite: two rooms – a bedroom and a separate study room. There is also a small sitting area with a kitchenette. Newly refurbished.



3-4. Two rooms available nearby but off site with same conditions as in the heritage house.



Reviews

Dr Kate Dunhill, May 2025 Course Participant:

***"Five stars!** An ideal place to stay during the course — just a short walk to campus, spacious warm room with a private bathroom, and a great study area. The food was incredible — genuinely fine dining quality with flexible meal times. The hosts were amazing and made everything stress-free so I could focus on studying. Very reasonably priced for the quality. Highly recommend!"*

Dr Rebecca Veitch, May 2025 Course Participant:

*"I stayed at Marli for three weeks while attending a course in Dunedin, and **I couldn't have asked for a better experience.** Les and Rose were the most welcoming and accommodating hosts – they went above and beyond to make sure we felt right at home. The meals were absolutely delicious and there was always lots of variety and yummy desserts.*

The house itself is a beautiful Dunedin heritage home, our rooms were warm and spacious. It was a great location, walking distance to both the city centre and the university. It was the perfect spot for while we were studying – warm, homely, and comfortable with great food.

I'd highly recommend Marli to stay and hope to see Rose and Les again - they felt like our second Dunedin family by the time we left!"

Contact: Rosemary Crick | 19 Royal Terrace, Dunedin
Ph: 021 068 9188 | E: rose@cre8ive.co.nz